

St Richard's C of E Primary School



Drugs & Substance Abuse Policy

This policy was last reviewed:	Summer 2023
This policy will be reviewed again:	Summer 2026
This policy will be reviewed by:	School Community Committee
Statutory policy?:	No
Source:	School Community Committee



DRUGS AND SUBSTANCE ABUSE POLICY

Drugs education is part of the school's commitment to Health and Wellbeing agenda. Drug refers to any substance which alters body chemistry and consequently behaviour.

General Aims

At St. Richard's CE Primary School:

- We do not condone the misuse of drugs and alcohol or the illegal supply of these substances.
- We are committed to the health and safety of everyone at St Richard's School and will take action to safeguard their well-being.
- That our pastoral role in the welfare of children is very important, and through the general ethos of the school, will seek to provide a climate of trust and support through such activities as circle time, collective worship, PHSE
- We inform and educate children on the consequences of drug use and misuse.
- Health education is a vital strand of the Personal, Social, Health and Economic education
- We share the responsibility for the education of children with parents. Effective communication and co-operation is essential to the successful implementation of this policy.
- We aim to support the differing needs of children, acknowledging that while substance use and misuse is rising most children are not involved in it.

Objectives of drugs education

- For children to say no to drugs
- This will begin with fostering a sensible approach to medicines and then by increasing knowledge, challenging attitudes enable pupils to develop strategies to protect themselves.
- Through providing appropriate and accurate information about substances we will increase understanding about the implications and possible consequences of use and misuse;
- We seek to minimise the risks that users and potential users face; to enable young people to identify sources of appropriate personal support.

These aims should be fulfilled through pupils' experiences in the taught curriculum, the informal curriculum and through opportunities for extracurricular activities.

Liaison

We actively co-operate with other agencies such as Community Police, Social Services. Local Authority and Health and Drug Agencies and visitors who support the school will be informed of the values held within this policy.

Co-ordination of Drugs Education

The headteacher takes overall responsibility for the policy and its implementation, for liaison with the Governing Body, parents, Local Authority and appropriate outside agencies. The head teacher will ensure that all staff dealing with substance issues are adequately supported and trained.

Instances of misuse or supply on the premises.

Whilst this is unlikely to be an issue in a primary school it is important that we have processes in place to deal with such a matter. In instances involving substance misuse or supply on the premises, and following discussion between staff members who know the pupil well, parents will

be informed at the earliest opportunity by the head teacher. The school and the parents can then work together to support the young person involved. If a young person admits to using or supplying substances off the premises, the teacher's discretion will be involved, but should inform the head teacher, who will inform the parents.

There is no legal obligation to inform the police, though they may be able to give relevant support and advice. However, a school cannot knowingly allow its premises to be used for the production or supply of any controlled drug, or the preparation or smoking of cannabis or resin. Where it is suspected that substances are continuing to be sold on the premises, details regarding those involved as well as much information as possible, will be passed to the Police Liaison Officer or Community Affairs Department.

The Governing Body will be involved in substance education and substance related incidents in the same manner as any other matter concerning the direction of the school.

The school will consider each substance incident individually and recognises that a variety of responses will be necessary to deal with incidents. The school will consider very carefully the implications of any action it may take. It seeks to balance the interests of the pupil involved, the other school members and the local community. Permanent exclusion is seen as a last resort as it may only transfer the problem.

Meeting the requirements of National Curriculum through Physical Health and Mental Wellbeing Education

Drug education will be provided in the broader context of the teaching of physical health and mental wellbeing and understanding issues around substance misuse.

See the Personal, Social, Health and Economic Education Curriculum Map for further details of how this will be delivered.

It will take account of the age, sex and cultural social background of the pupils, provide factual and accurate information.

Drugs education should:

- Be delivered in a clear and open manner that informs without encouraging drug misuse
- Encourage pupil participation and understanding
- Be provided at regular intervals throughout the school career
- Be evaluated
- Be backed up with access to advice or help for young people and their families with problems or concerns

Procedures for Managing Drug Related Incidents

In response to any drugs related incident, it is essential that each situation is considered individually and that the needs and circumstances of the pupils are paramount.

If the situation leads to a medical emergency the school emergency aid procedures will be followed immediately.

In the absence of a medical emergency the Headteacher and DSL will be informed and an appropriate response considered.

Protocols for responding to the following drug related incidents, in line with national guidance, are outlined as flow charts in Appendix 1:

- Parents/Carers/Others under the influence of drugs /alcohol on school premises
- Student(s) under the influence of drugs /alcohol on school premises.
- Pupils using medicines inappropriately on school premises.
- Drugs and / or paraphernalia found on pupils and/or premises
- Pupils making disclosure about their own or parents/carers/others use of drugs/alcohol
- Supplying (drugs/alcohol/tobacco) by pupils/parents/carers/others

If we are presented with any other drugs related incidents not outlined in Appendix 1, we will refer to the DfE and Police guidance.

Unless there are exceptional circumstances we will inform parents /carers at the earliest opportunity so that we can work together to support the student and to resolve difficulties.

Should a substance suspected of being illicit be found on the school premises it will be handed to the Headteacher and, in the presence of another member of staff placed in a sealed container in the school safe until it can be delivered to or collected by a police officer. S/he will also be involved in advising the school on the most appropriate response to the situation. The Local Authority School Drug Adviser and Drug & Alcohol Action Team are also able to provide guidance and advice.

All staff will be made aware of the legal constraints on gathering evidence and questioning those involved. They will not take action without involving the headteacher.

Smoking Statement

Smoking is not allowed on the school site or in site of the school.

Managing Medicines on the School Premises

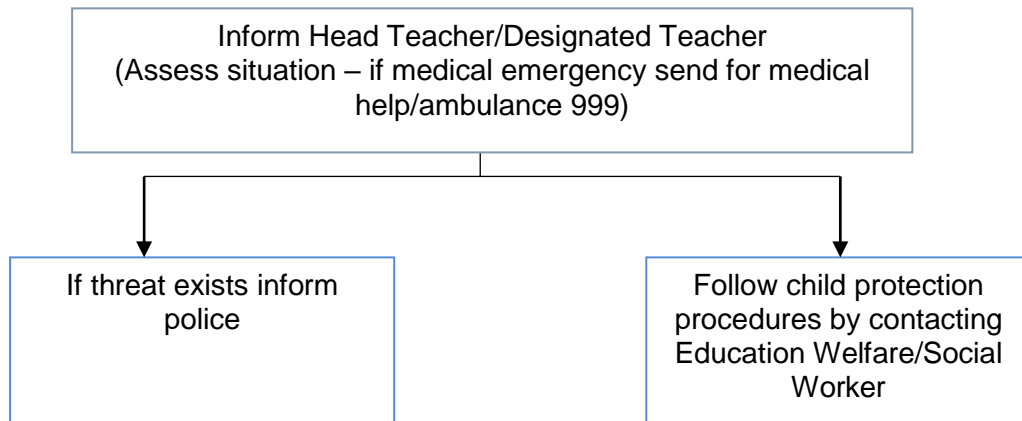
Some pupils may require medicines that have been prescribed for their medical condition during the school day. More detailed information about how we manage medicines on our site can be found in our [‘Medicines in Schools and dealing with pupils with health needs policy](#) on our website.

Appendix 1

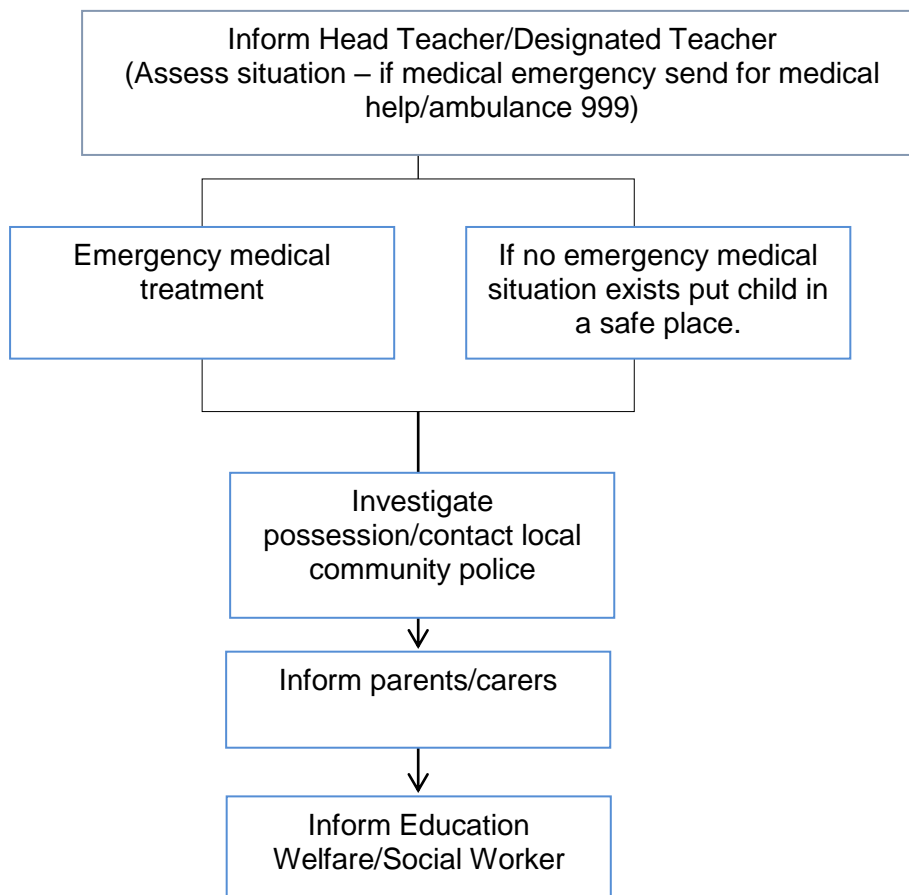
Procedures for Managing Drugs Related Incidents

This appendix outlines our procedures for managing the following drugs related Incidents, as detailed in each flow chart:

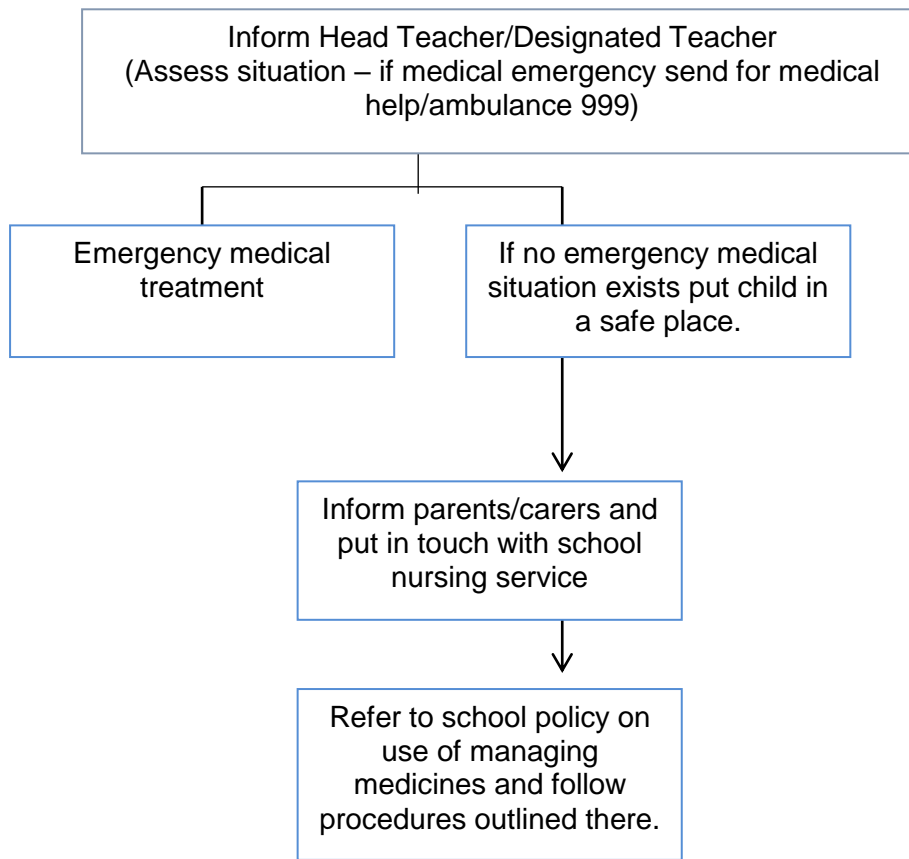
1. Parents/Carers/Others under the Influence of drugs/alcohol on school premises



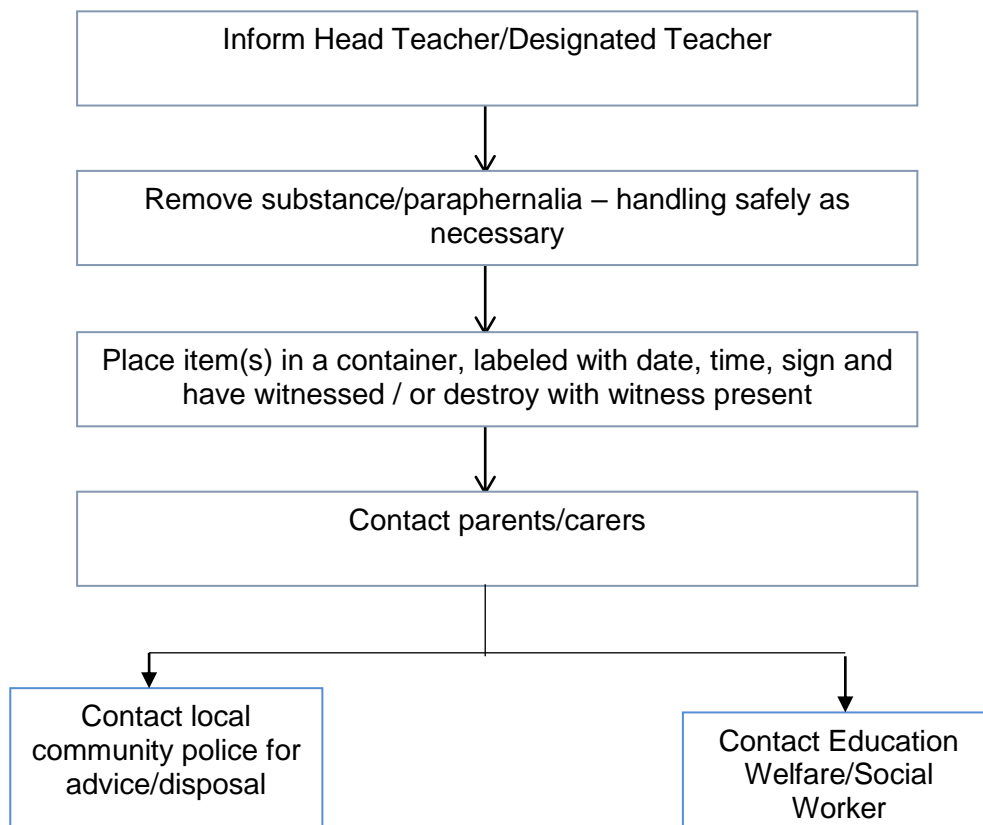
2. Student(s) under the influence of drugs/alcohol on school premises.



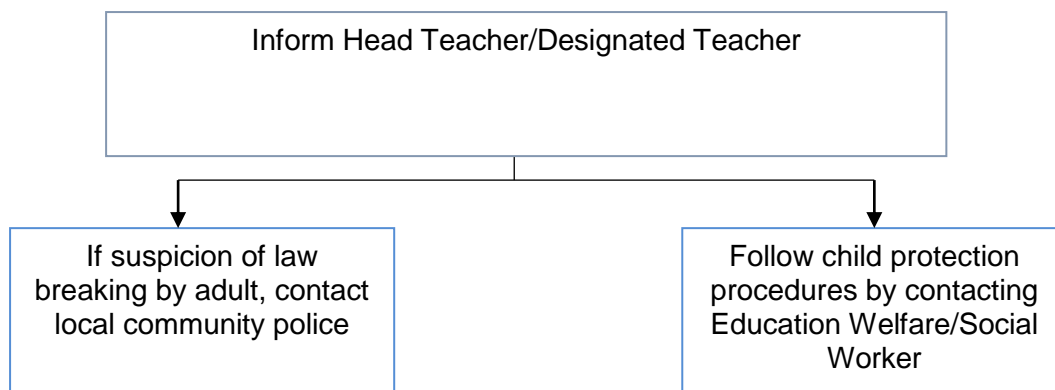
3. Pupils using medicines inappropriately on school premises.



4. Drugs and/or paraphernalia found on pupils and/or premises



5. Pupils makes disclosure about their own or their parents'/carers'/others' misuse of drugs/alcohol



6. Supplying (drugs/alcohol/tobacco) by pupils/parents/carers/others

